



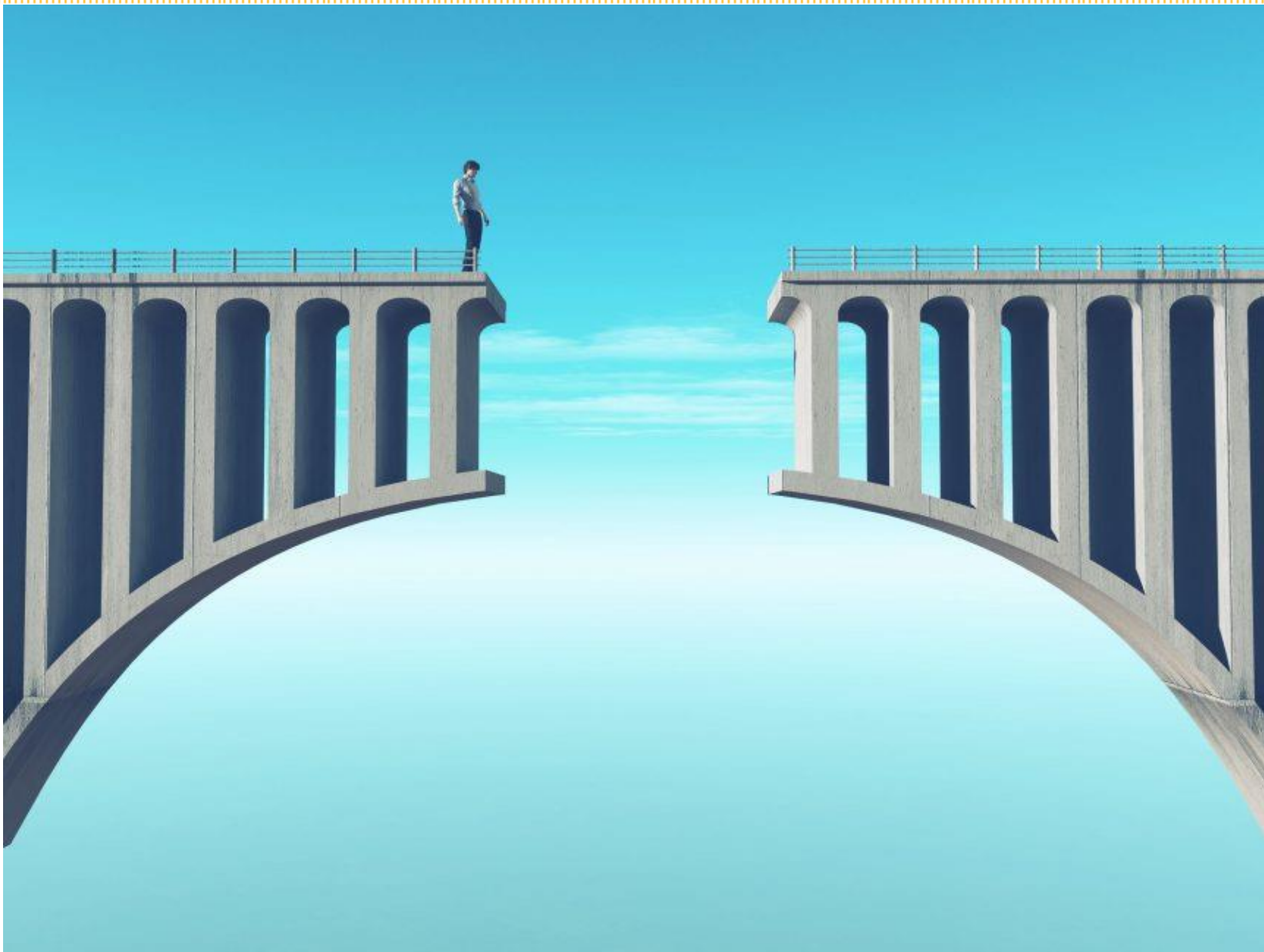
rentree
werken na kanker

2016



1995





Rentree - werken na kanker





Role of the jobcoach

Jobcoach : training, supervision and intervision

Role can change during the coaching process

From directive role to role as a partner...



The jobcoach of Rentree is specialized in the rights and obligations of participants, the impact of cancer, communication with the network... Participants learn how to deal with the impact of cancer at work and how to communicate with the employer. Together they are looking for answers to their questions. The employer and other important persons such as the advisory physician are actively involved in the rehabilitation process.

Unique partnership



I wanna return to work.
But how to begin?



get in contact with Rentree
by e-mail or phone



our jobcoach will meet
you to get to know
your situation



in cooperation with all
parties we prepare a
RTW plan



during work we'll guide
you and optimise
working conditions



we'll meet one last time
...and of you go!

a participant:
"Rentree was a great help
in one of the most fragile
periods in my life."

Unique partnership

Participant

- Information, advise
- Empowering
- Emotional support
- Co creation

Employer

- Involvement
- Participant or coach

Network

- All stakeholders, physician, insurance, hospital, partner, family, friends....

“Work is always there”



Resources and obstacles



Download from
Dreamstime.com

© 2011
Thomas J. (Dreamstime.com)







“Hello, I am back...”



Contact – more information

Dispatch:

0487 90 74 80

info@rentree.eu

www.rentree.eu

Coördinator Sarah De Wolf:

0493 13 53 31

sarah.dewolf@rentree.eu